

Yorketown Area School

7-12 MOBILE PHONE USE POLICY



Can I bring my phone to school?

Yes, but students must turn devices off or place them in flight mode before handing them up in morning home group. This includes taking off and storing any wearable technology that fits the definition of this policy, such as smartwatches.

Years 7-12 students must hand in personal devices during morning homegroup each day, to be securely stored by staff. Students collect devices in afternoon homegroup at the end of the school day, or when being signed out early by a parent.

When can I use my mobile phone?

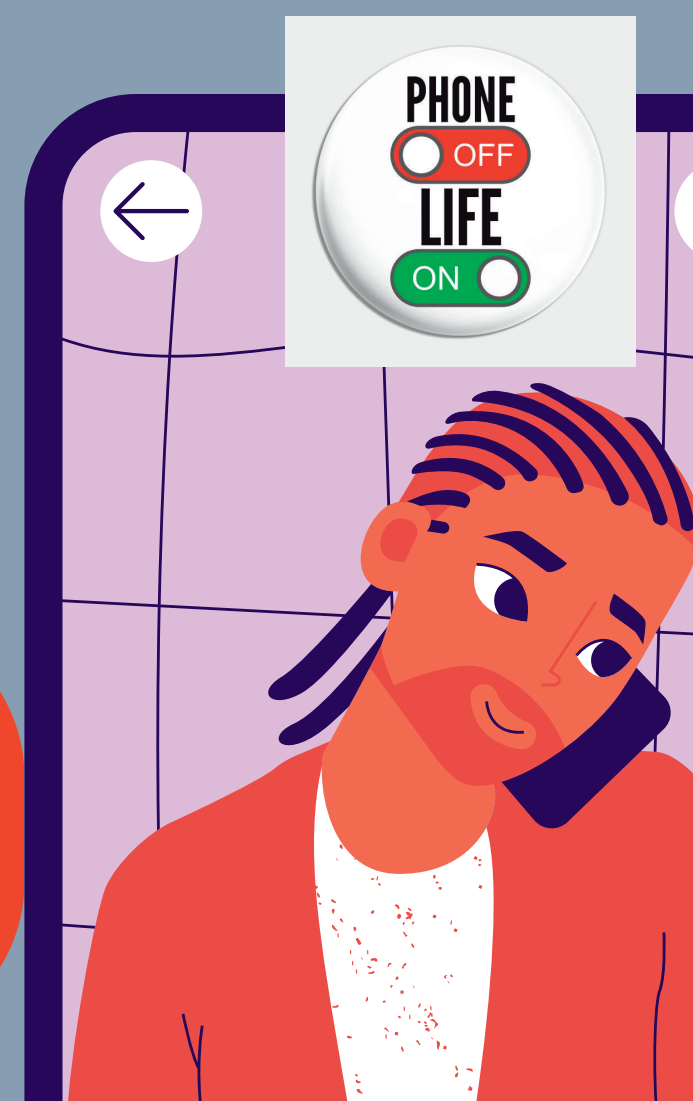
Mobile phones are not to be used during the school day from morning homegroup until school dismissal.

Where is my mobile phone stored during the day?

All devices are stored in a secure location for the duration of the school day.

What happens if I don't comply?

Where students use a personal device at school without an approved exemption, or use it inappropriately, a response will be provided in line with the school's behaviour support policy.



1st offence

Students will be asked to hand over their personal device(s) to be securely stored by staff and returned at the end of the school day. Parents are contacted.

2nd offence

The student will be asked to hand over their personal device(s) to be securely stored by staff and a parent will be called to collect the device(s).

3rd offence

Repeated or intentional breaches of this policy, or refusal to follow a staff member's direction to hand over a personal device will result in the school leadership team contacting home.

The student will no longer be permitted to have a device at school.